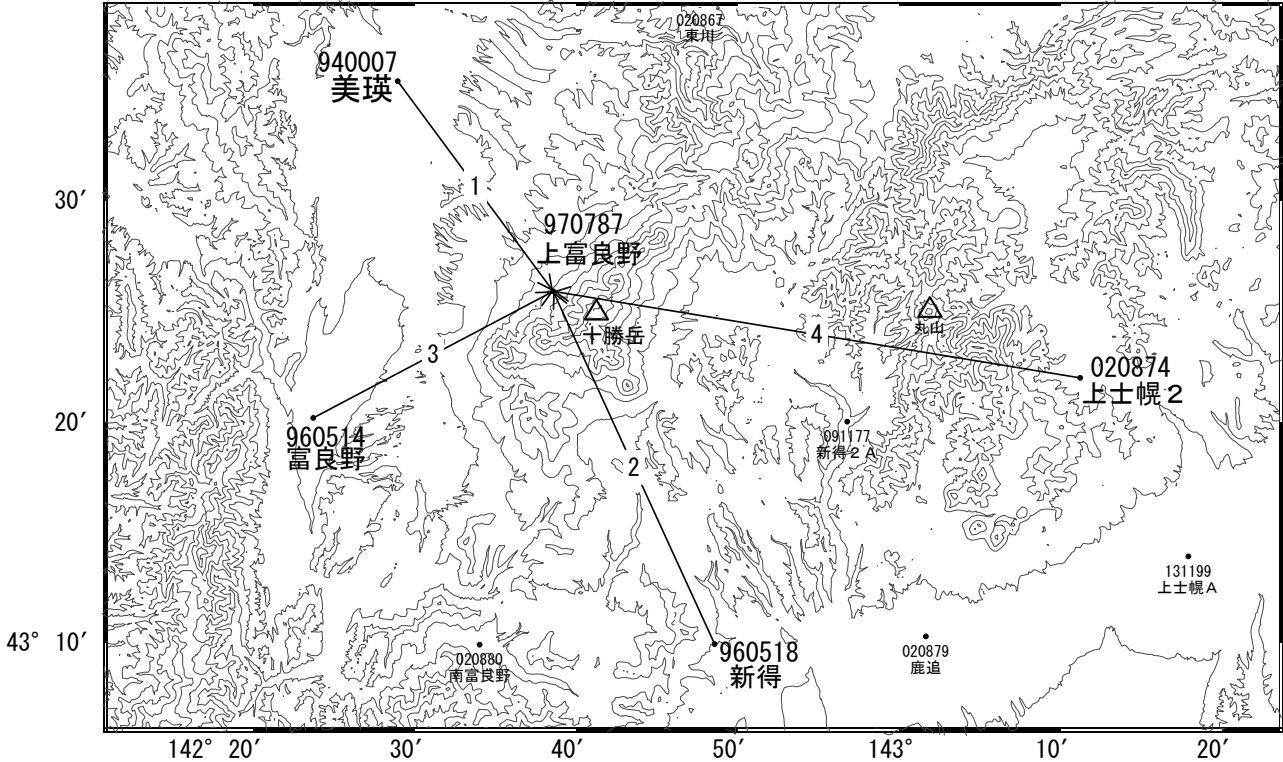


十勝岳周辺の地殻変動

—GEONET(電子基準点等)による連続観測結果—

顕著な地殻変動は観測されていません。

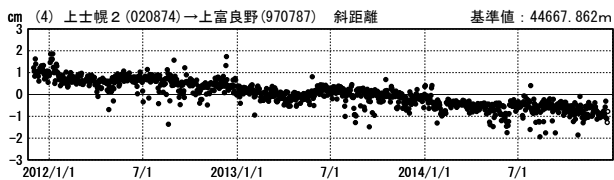
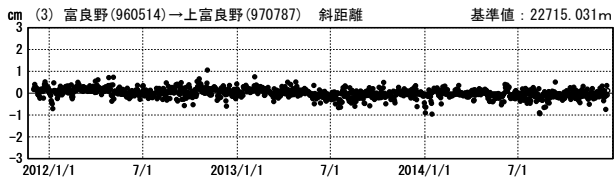
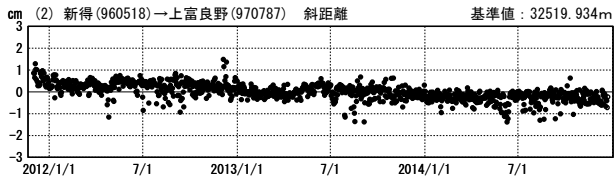
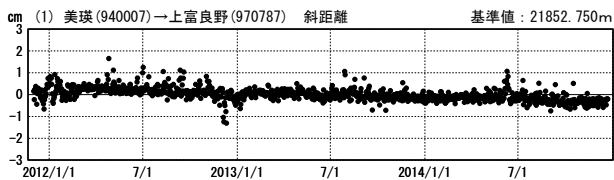
十勝岳周辺 GNSS連続観測基線図



国土地理院

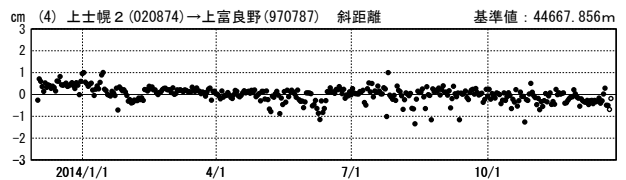
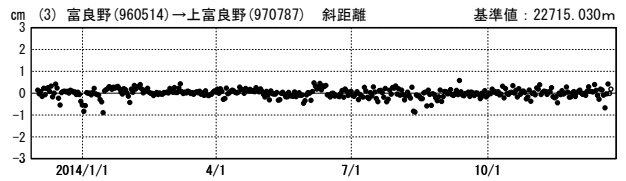
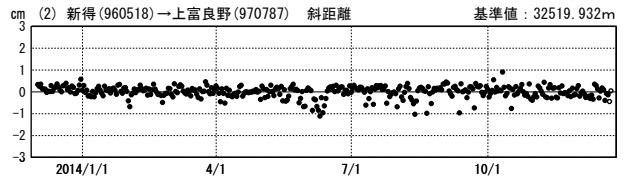
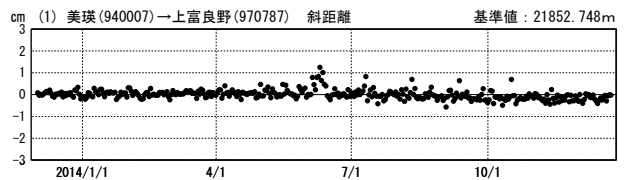
基線変化グラフ

期間: 2011/12/01~2014/12/22 JST



基線変化グラフ

期間: 2013/12/01~2014/12/22 JST



●—[F3:最終解] ○—[R3:速報解]

国土地理院