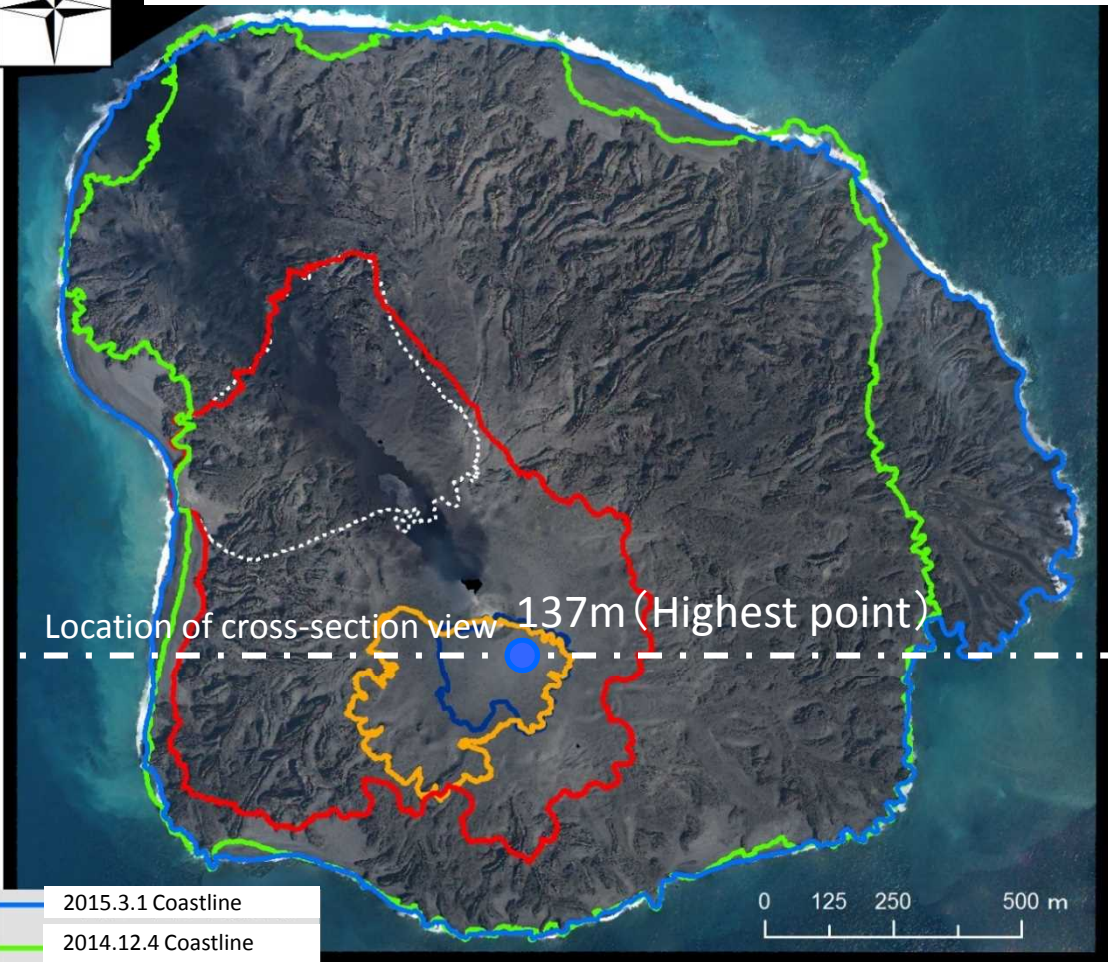


Orthophotographs of Nishinoshima Island (photographed on March 1st, 2015)

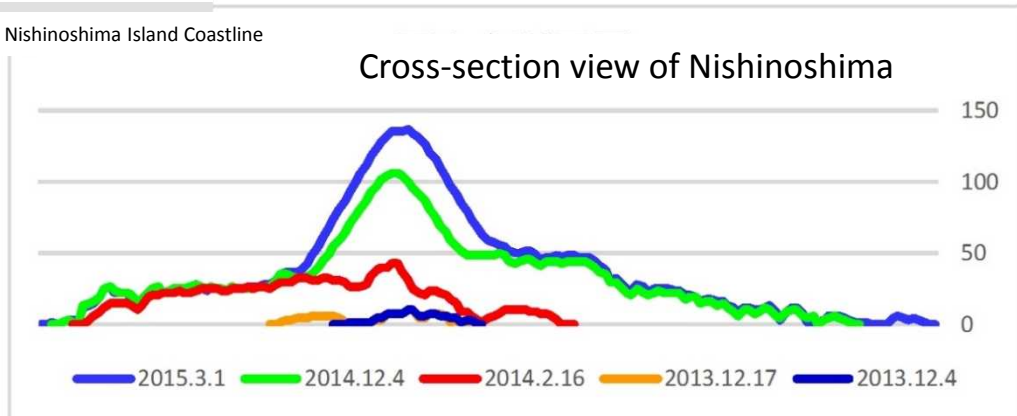
Coastline changes

(December 4th, 2013 – March 1st, 2015)



- 2015.3.1 Coastline
- 2014.12.4 Coastline
- 2014.2.16 Coastline
- 2013.12.17 Coastline
- 2013.12.4 Coastline
- Former Nishinoshima Island Coastline

Island area: approx. 2.55 km² (as of March 1st, 2015)



Cross-section view comparison at highest point around current crater (December 4th, 2013 – March 1st, 2015)