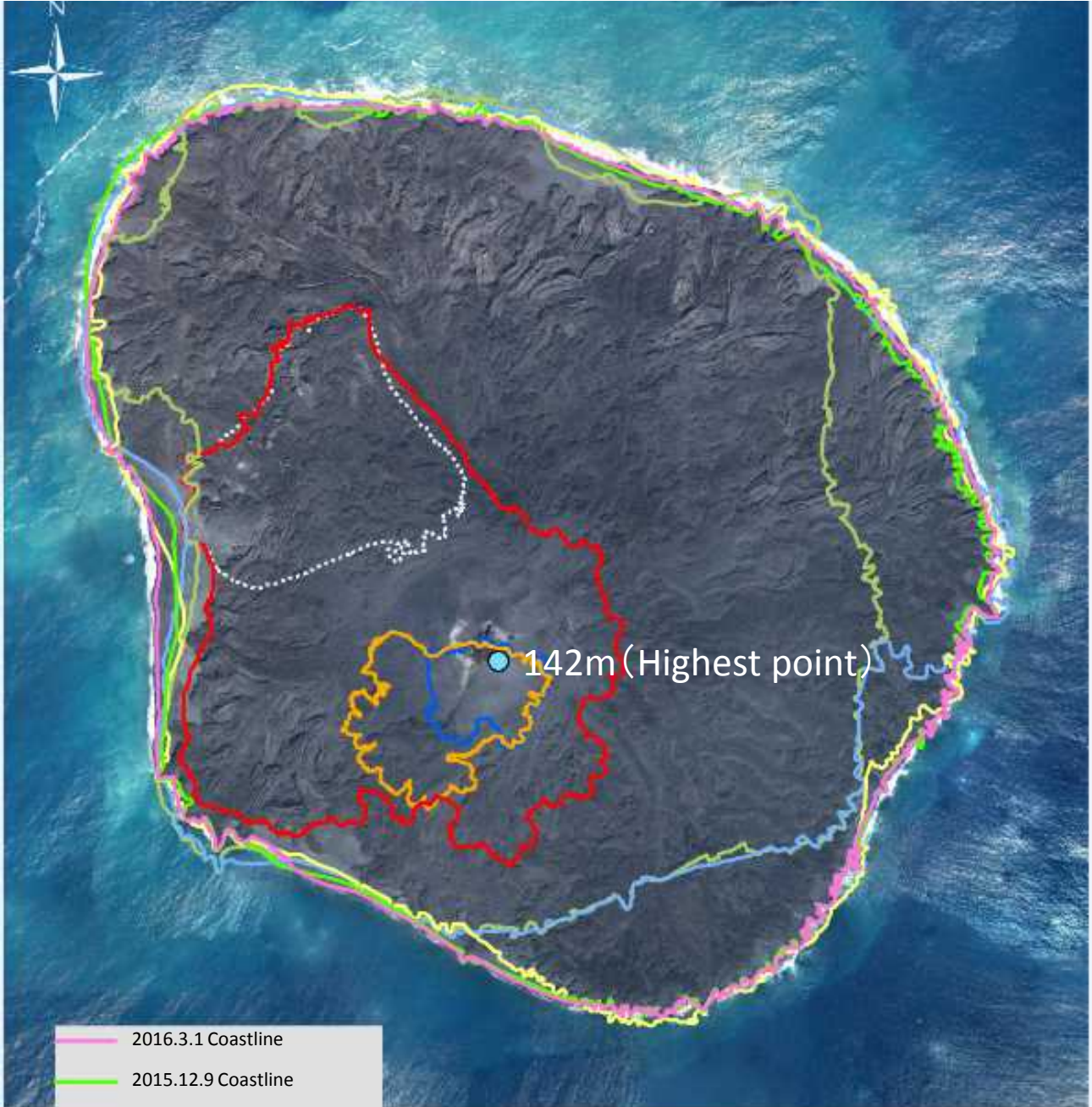


Orthophotographs of Nishinoshima Island (photographed on March 3rd, 2016)

Coastline changes (December 4th, 2013 – March 3rd, 2016)



- 2016.3.1 Coastline
- 2015.12.9 Coastline
- 2015.7.28 Coastline
- 2015.3.1 Coastline
- 2014.12.4 Coastline
- 2014.2.16 Coastline
- 2013.12.17 Coastline
- 2013.12.4 Coastline
Former Nishinoshima Island
Coastline



Island area: approx. 2.73 km² (as of March 3rd, 2016)